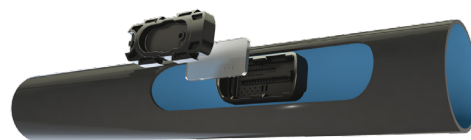




## DRIPNET PC™ HWD

COMPACT INTEGRAL PRESSURE-COMPENSATING,  
CONTINUOUSLY SELF-CLEANING DRIPPER



16009 - 16010 - 16012 - 20010 - 20012 - 23009

### APPLICATIONS

On-surface multi seasonal row crops.

### FEATURES AND BENEFITS

- Pressure compensated: Precise and equal amounts of water are delivered over a broad pressure range. 100% uniformity of water and nutrient distribution along the laterals.
- Continuously self flushing: Continuously flushing debris, throughout operation, not just at the beginning or end of a cycle, ensuring uninterrupted dripper operation.
- Self-flushing system with wide filtration area improves resistance to clogging Which allows reduction in the filtration requirements and increasing the filtration efficiency.
- TurboNet™ labyrinth assures wide water passages, large deep and wide cross section improves clogging resistance.
- The water is drawn in to the dripper from the stream center, preventing the entrance of sediments in to the drippers.

### SPECIFICATIONS

- Pressure-compensating range: 0.25/ 0.40/ 0.60-2.5/ 3.0/ 3.5 bar (according to flow rate model).
- Recommended filtration: according to drippers flow rate.  
Filtration method is to be selected based on the kind and concentration of the dirt particles existing in the water. Wherever sand exceeding 2 ppm exists in the water, a Hydrocyclone is to be installed before the main filter. When sand/ silt/ clay solids exceed 100 ppm, pre treatment will be applied according to Netafim™ expert team's instructions.
- TurboNet™ labyrinth with large water passage.
- To be "welded" into thick-walled dripperlines (0.90, 1.00, 1.20 mm).
- Injected dripper, very low CV.
- Injected silicon diaphragm.
- High UV resistant. Resistant to standard nutrients used in agricultural.
- DripNet PC™ dripperlines meet ISO 9261 Standards with production certified by the Israel Standards Institute (SII).

## DRIPPERS TECHNICAL DATA

FLOW RATE* (L/H)	WORKING PRESSURE RANGE (BAR)	WATER PASSAGES DIMENSIONS WIDTH-DEPTH-LENGTH (MM)	FILTRATION AREA (MM <sup>2</sup> )	CONSTANT K	EXPONENT*	RECOMMENDED FILTRATION (MICRON)/(MESH)
0.4	0.25 - 2.5	0.52 x 0.60 x 22	29	0.4	0	130/120
0.6	0.25 - 2.5	0.61 x 0.60 x 8	39	0.6	0	130/120
1.0	0.40 - 3.0	0.76 x 0.73 x 8	39	1.0	0	130/120
1.6	0.40 - 3.0	0.84 x 0.80 x 8	39	1.6	0	200/80
2.0	0.40 - 3.5	1.02 x 0.88 x 8	39	2.0	0	200/80
3.0	0.40 - 3.5	1.02 x 0.88 x 8	39	3.0	0	200/80
3.8	0.60 - 3.5	1.02 x 0.88 x 8	39	3.8	0	200/80

\* Within working pressure range

## DRIPPERLINES TECHNICAL DATA

MODEL	INSIDE DIAMETER (MM)	WALL THICKNESS (MM)	OUTSIDE DIAMETER (MM)	MAX. WORKING PRESSURE (BAR)*	MAXIMUM FLUSHING PRESSURE (BAR)	KD
16009	14.2	0.9	16.0	2.5/3.0/3.5	3.9	0.72
16010	14.2	1.0	16.2	2.5/3.0/3.5	3.9	0.72
16012	14.2	1.2	16.6	2.5/3.0/3.5	3.9	0.72
20010	17.5	1.0	19.5	2.5/3.0/3.5	3.9	0.25
20012	17.5	1.2	19.9	2.5/3.0/3.5	3.9	0.25
23009	20.8	0.9	22.6	2.5/3.0/3.5	3.9	0.20

\*Maximum working pressure is defined by the dripper and not by the dripperline wall thickness

## DRIPPERLINES PACKAGE DATA (ON BUNDLED COILS)

MODEL	WALL THICKNESS (MM)	COIL LENGTH (M)	DISTANCE BETWEEN DRIPPERS (M)	AVERAGE* COIL WEIGHT (KG)	COILS IN A 40 FEET CONTAINER (UNITS)	TOTAL IN A 40 FEET CONTAINER (M)
16009	0.9	500	0.15 to 1.00	18.5	330	165000
16010	1.0	500	0.15 to 1.00	20.4	330	165000
16012	1.2	400	0.15 to 1.00	21.0	352	140800
20010	1.0	300	0.15 to 1.00	16.3	330	99000
20012	1.2	300	0.15 to 1.00	20.0	330	99000
23009**	0.9	350	0.15 to 0.20	22.5	480	168000
		400	0.25 to 1.00	25.0		192000

\* According to drippers spacing

\*\*Package only on carton/plastic coils